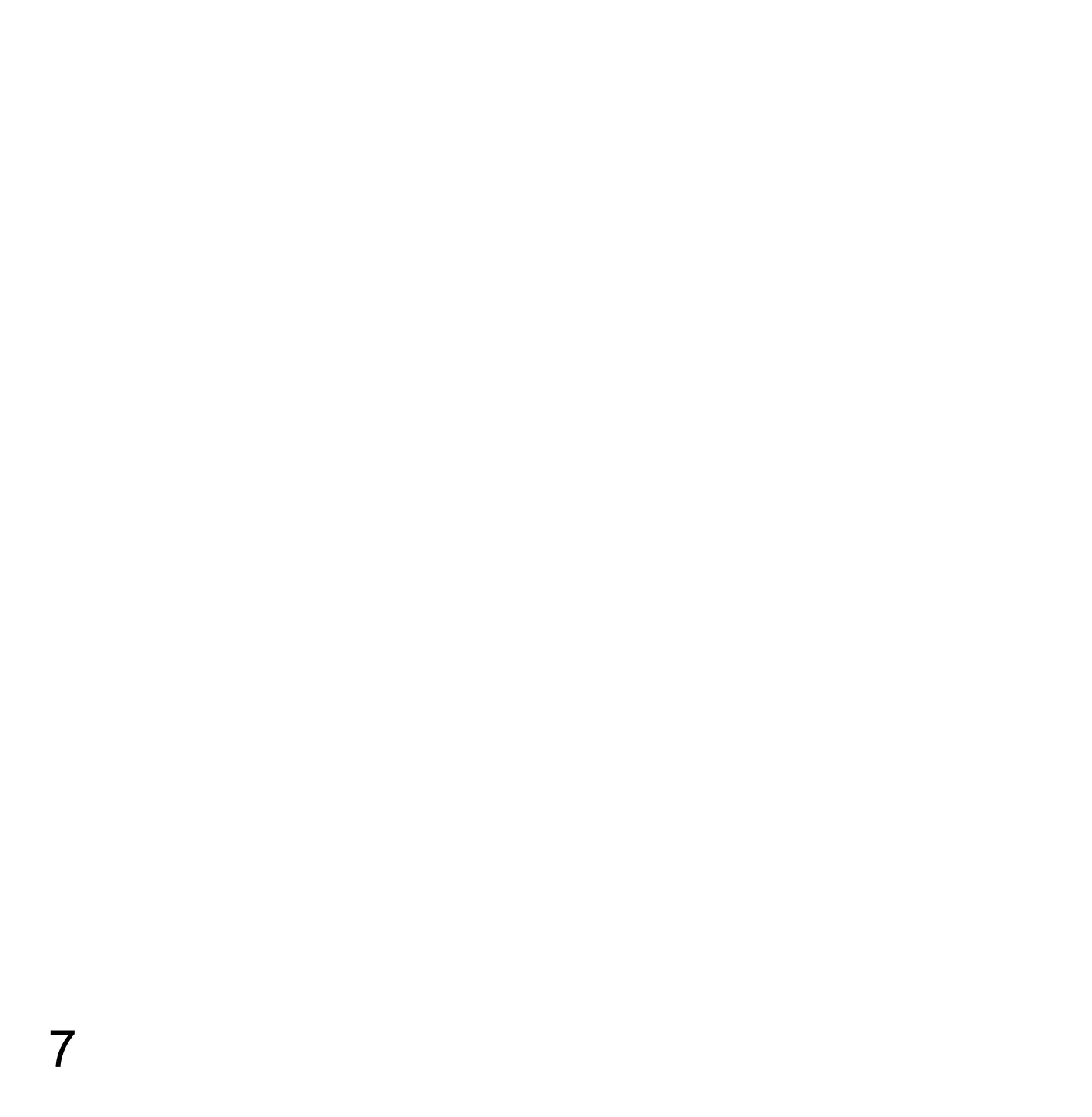
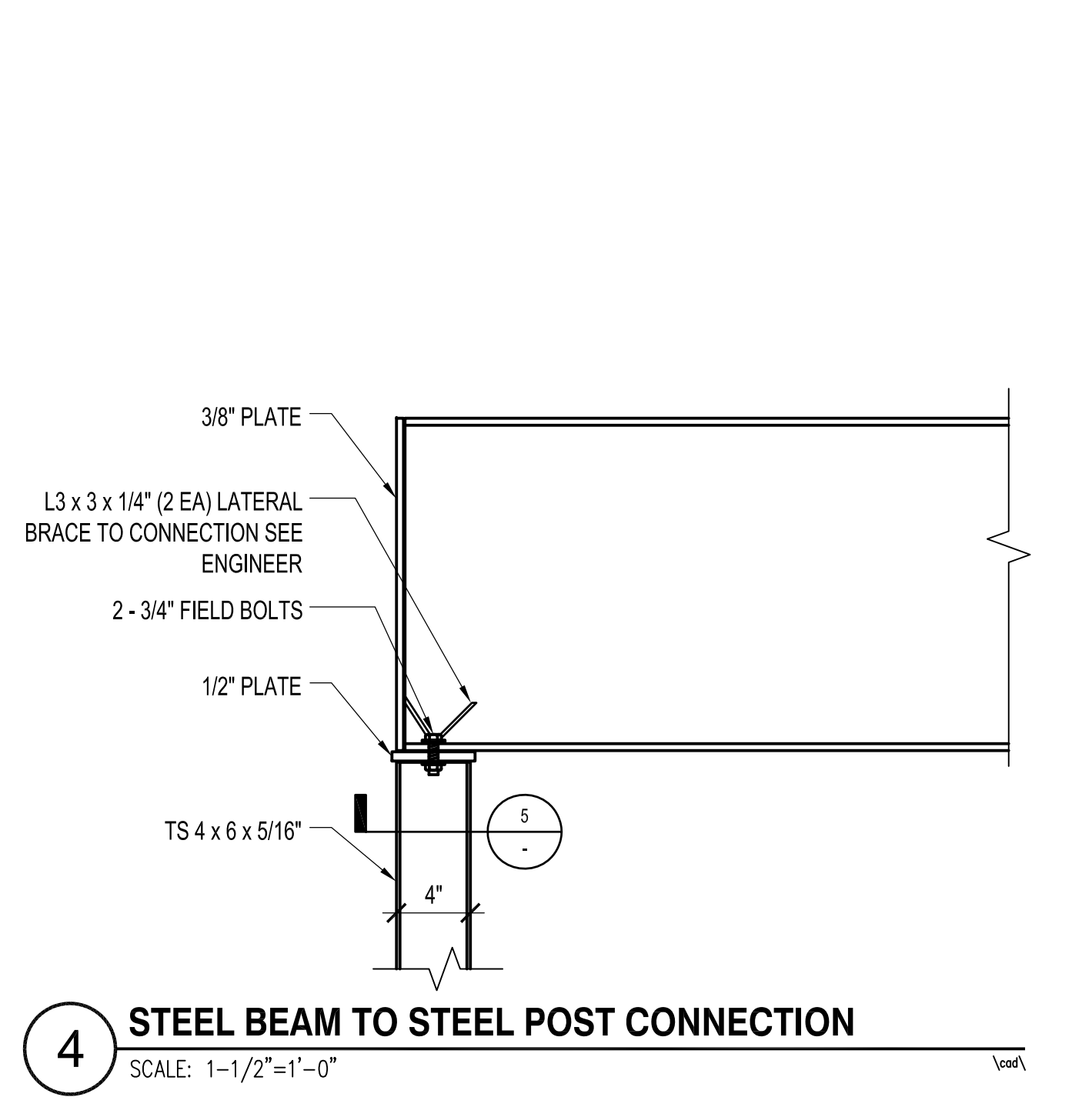


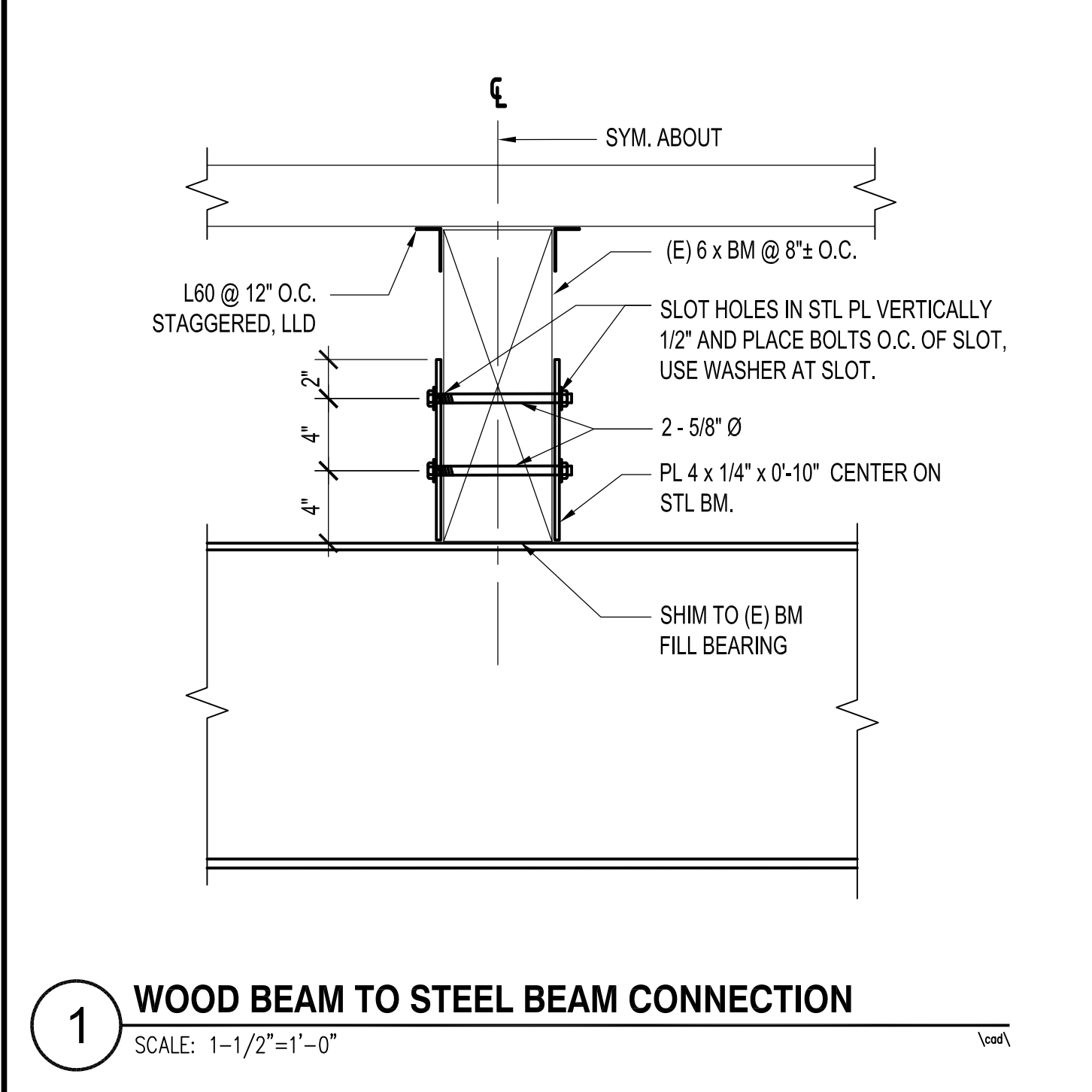
10



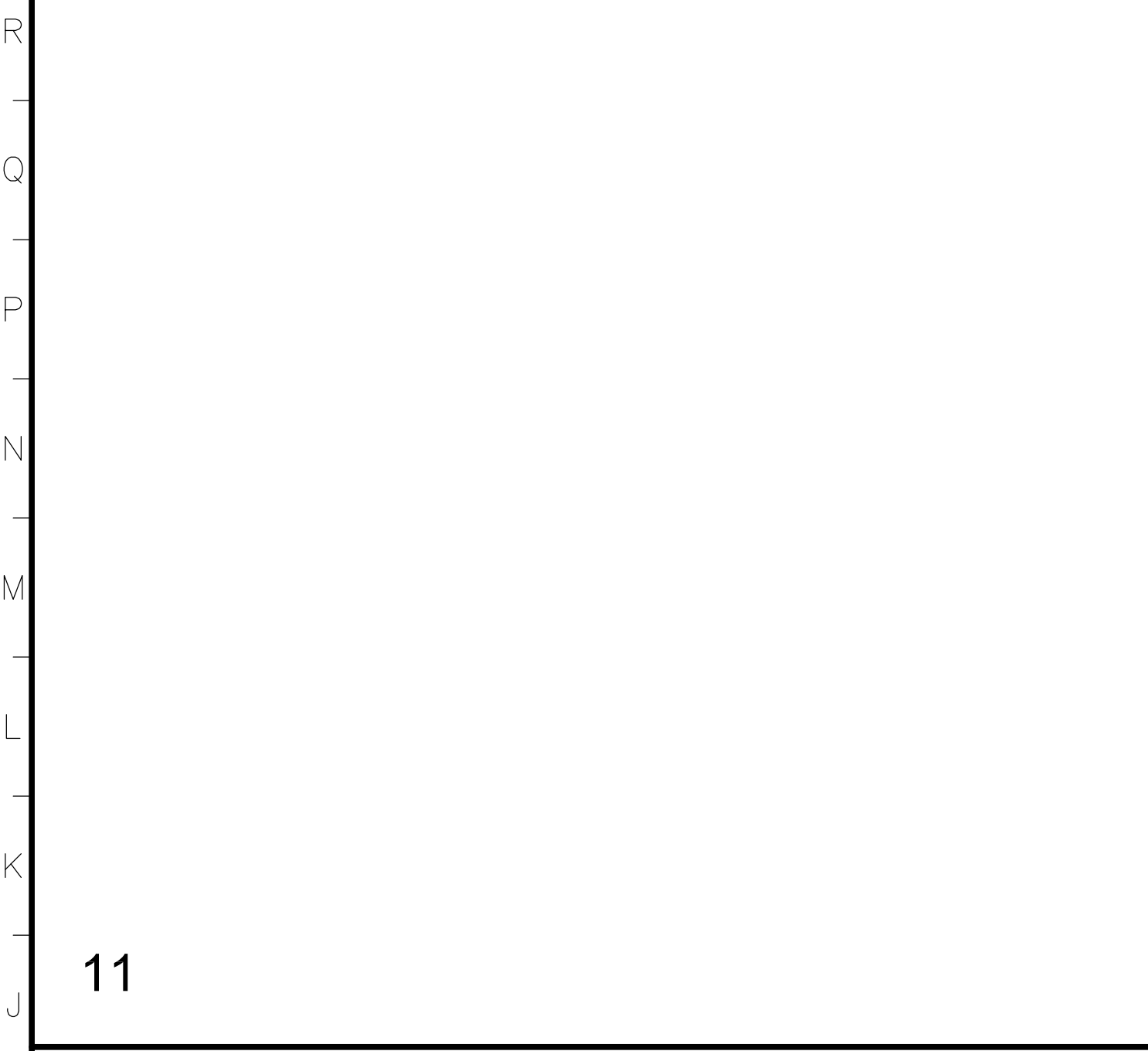
7



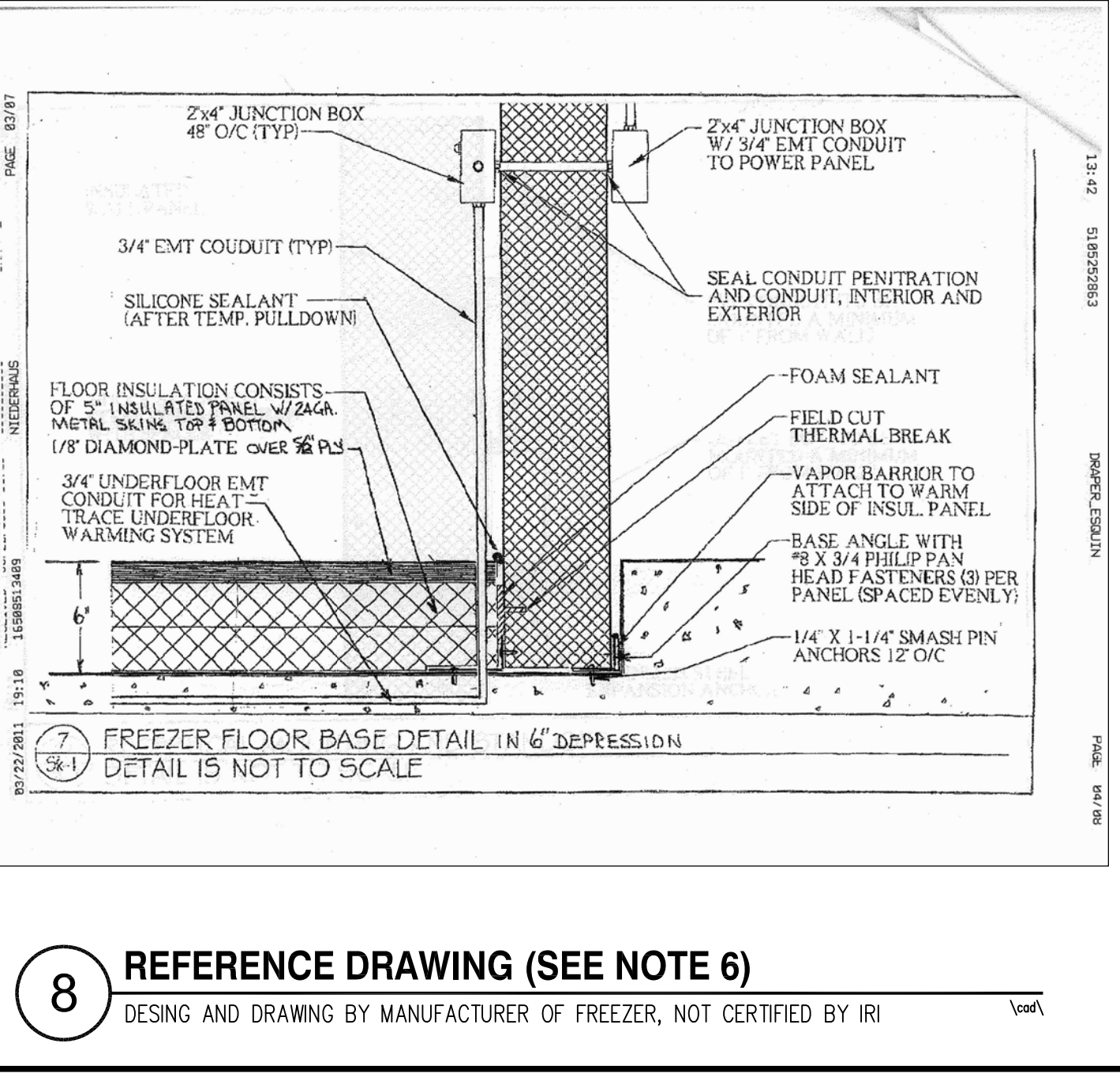
4 STEEL BEAM TO STEEL POST CONNECTION
SCALE: 1-1/2"=1'-0"



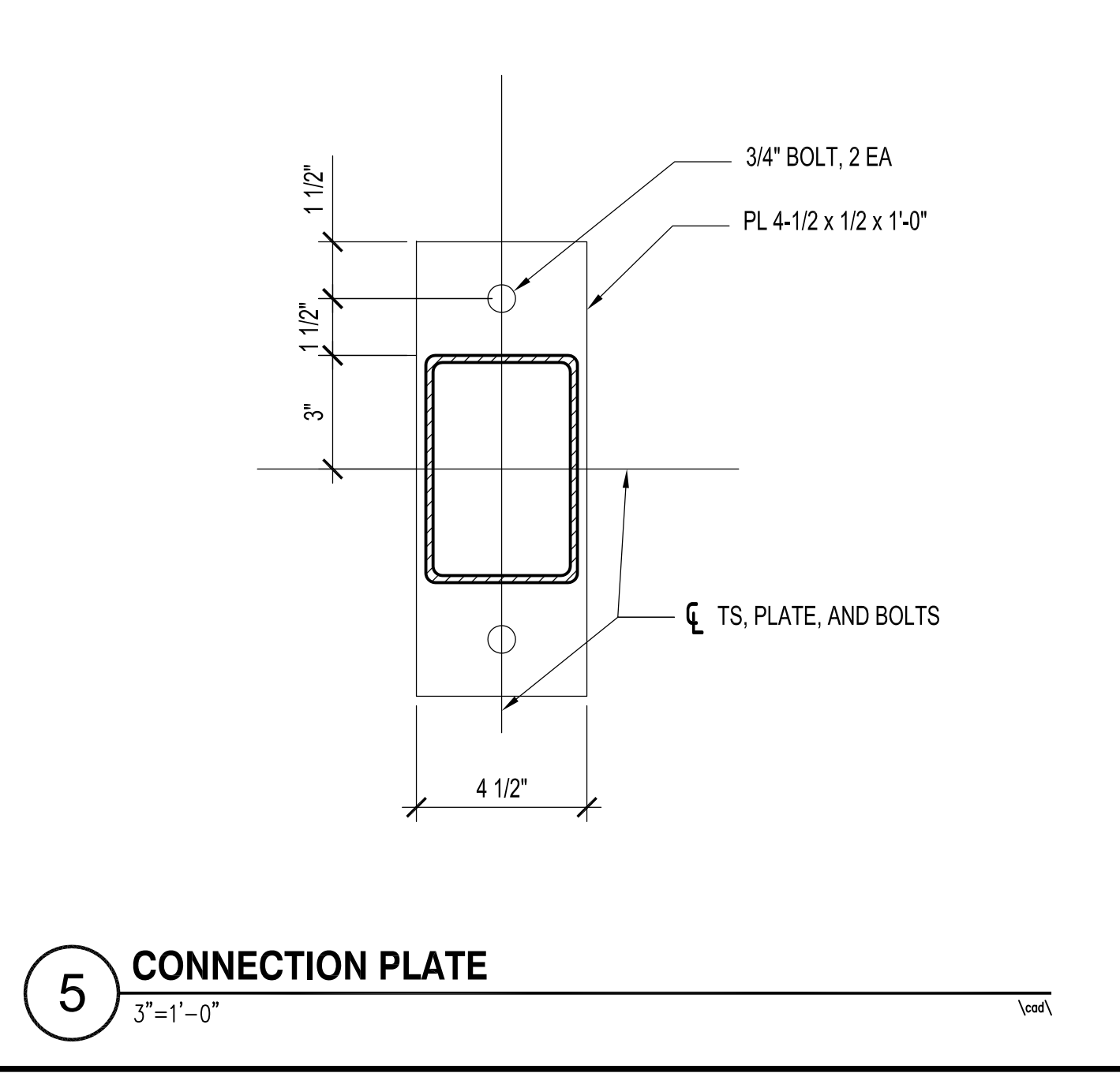
1 WOOD BEAM TO STEEL BEAM CONNECTION
SCALE: 1-1/2"=1'-0"



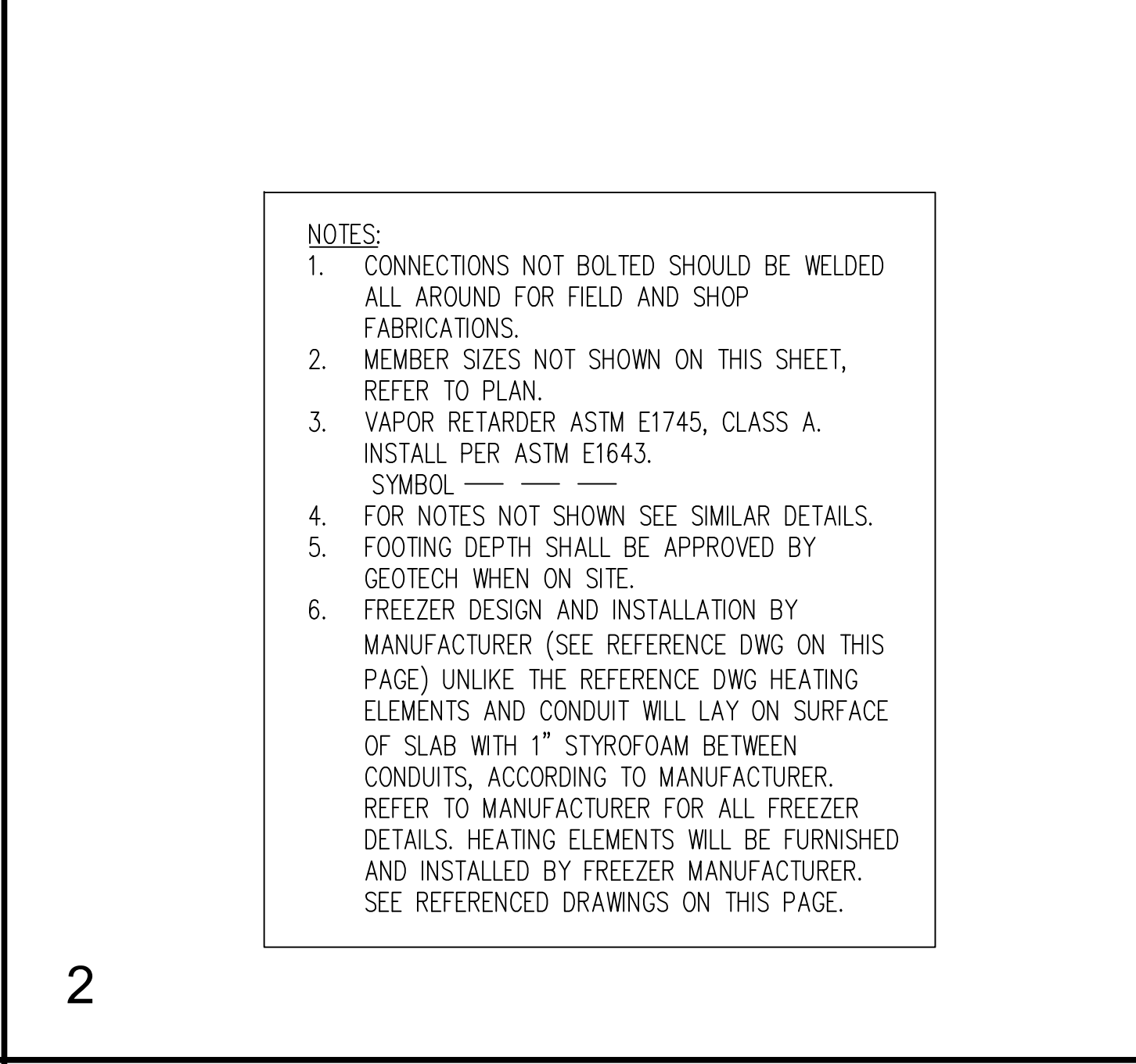
11



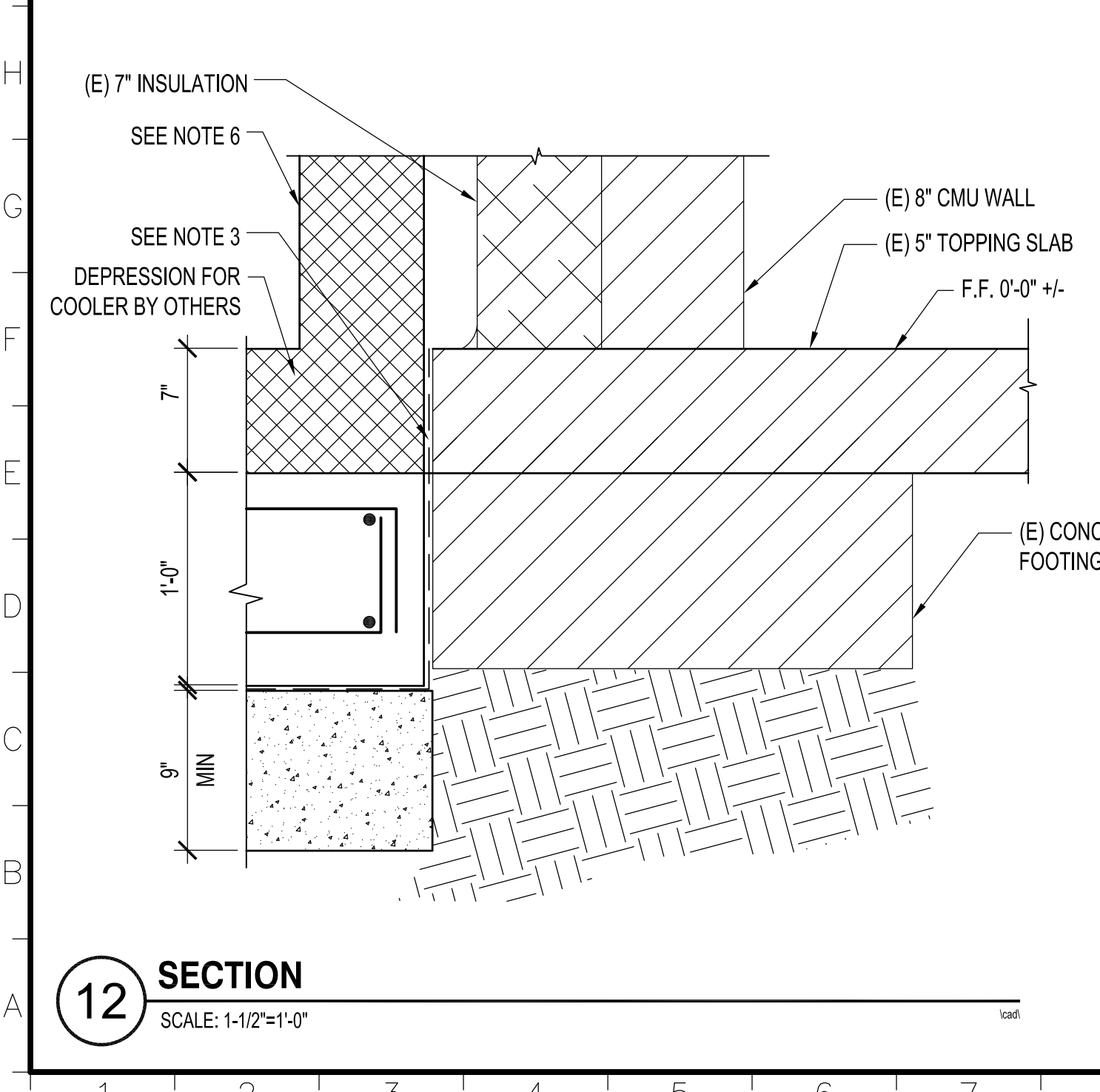
8 REFERENCE DRAWING (SEE NOTE 6)
DESIGN AND DRAWING BY MANUFACTURER OF FREEZER, NOT CERTIFIED BY IRI



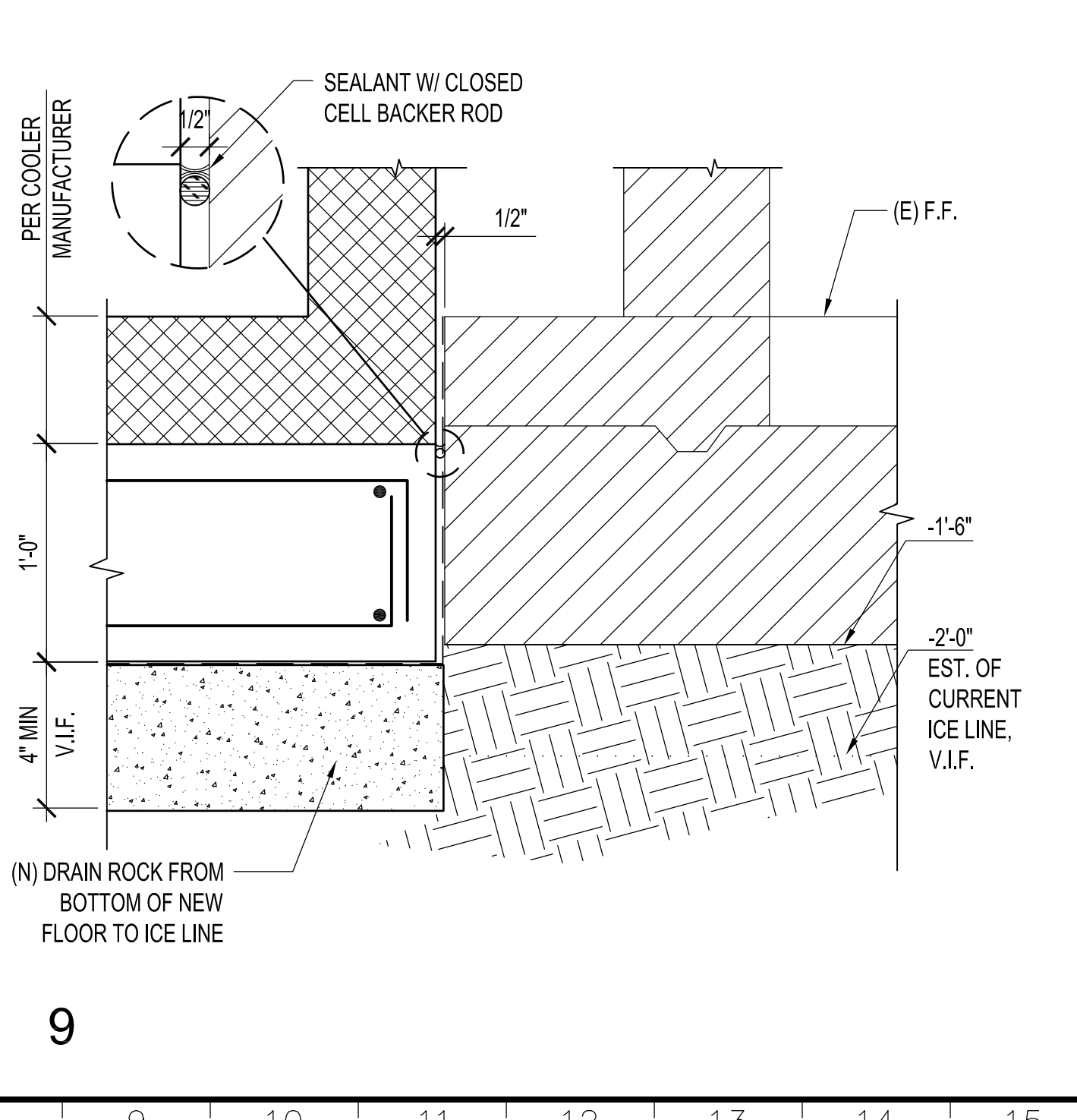
5 CONNECTION PLATE
SCALE: 3"=1'-0"



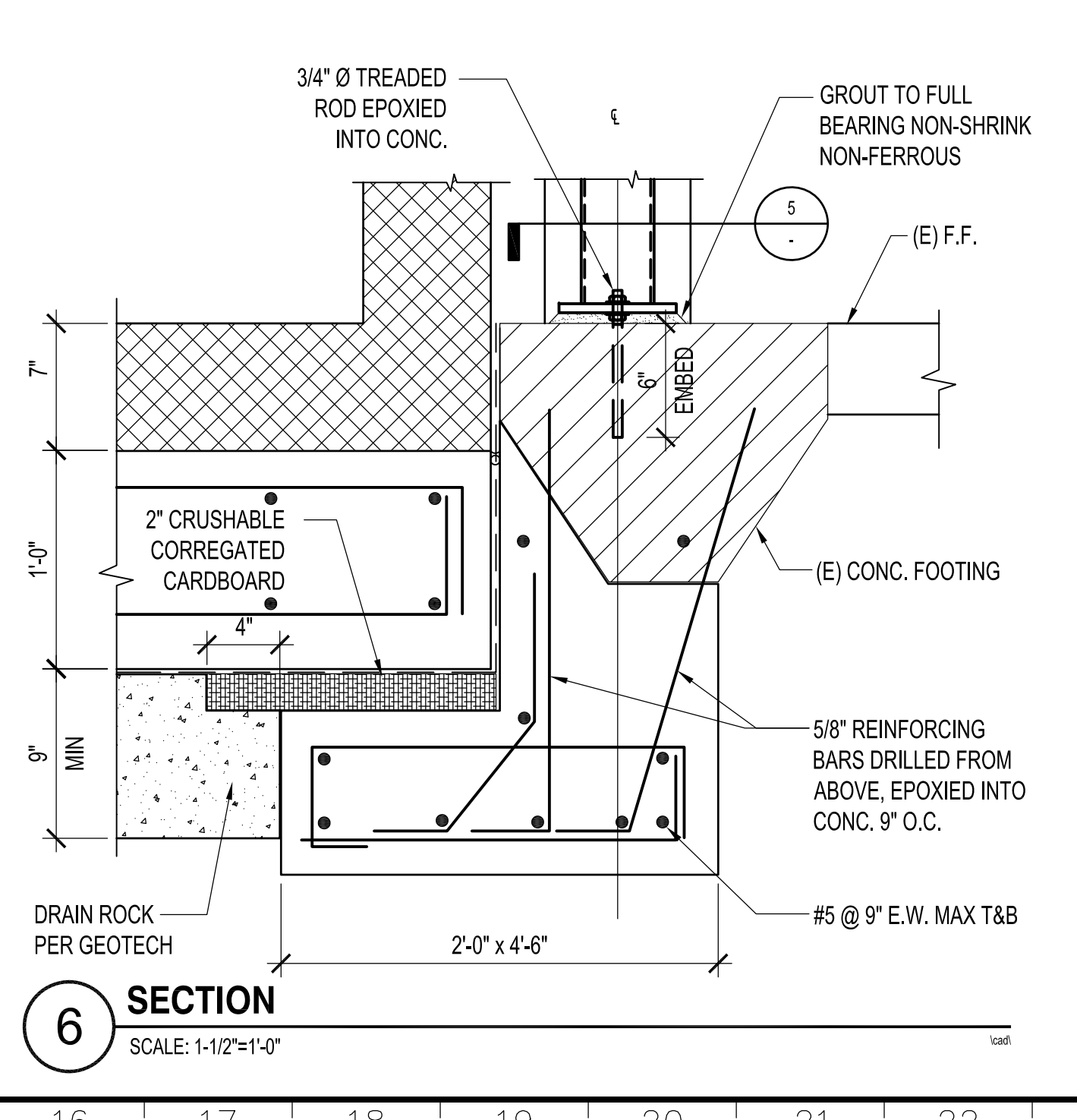
2



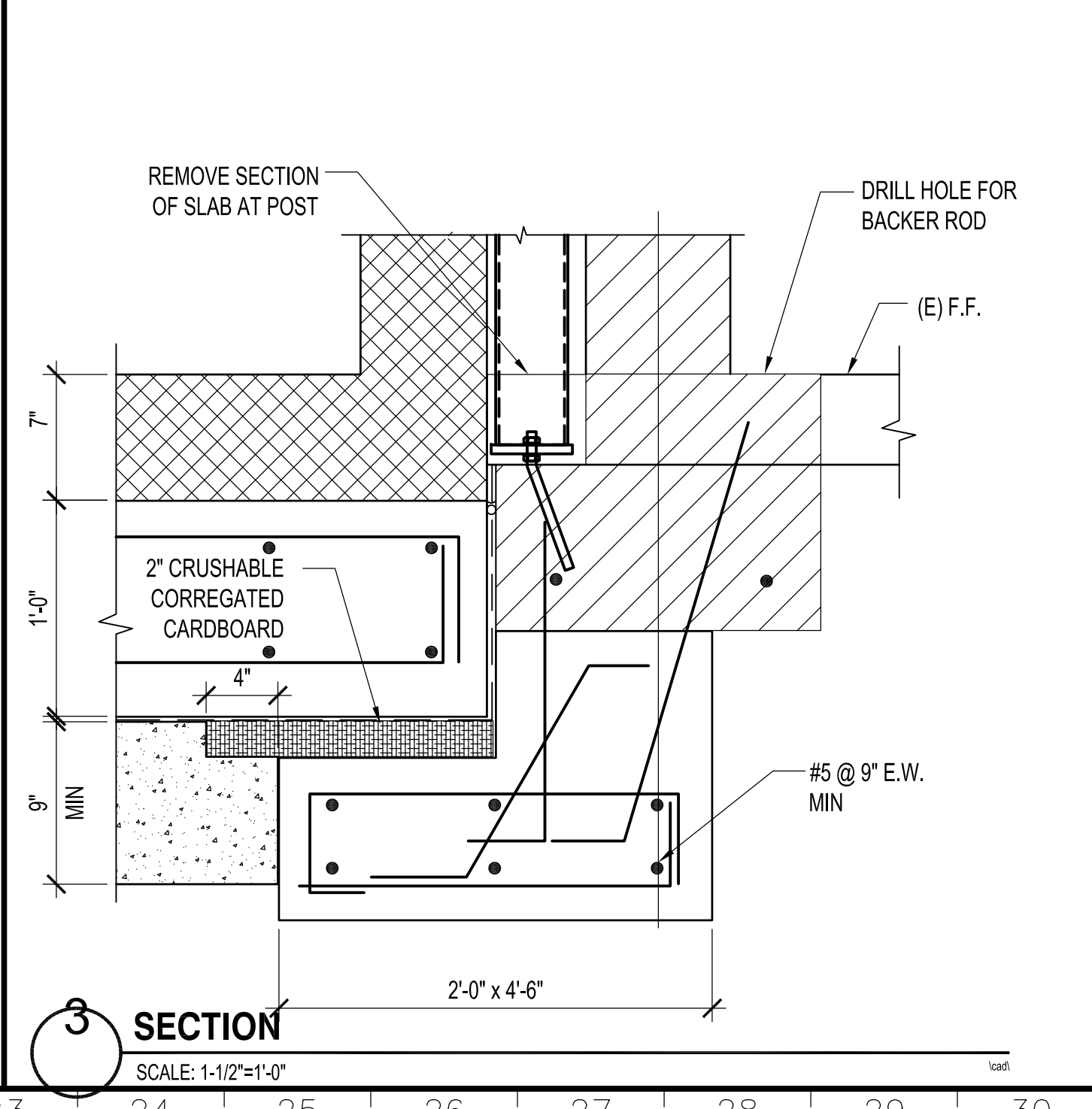
12 SECTION
SCALE: 1-1/2"=1'-0"



9



6 SECTION
SCALE: 1-1/2"=1'-0"



3 SECTION
SCALE: 1-1/2"=1'-0"

REVISION	DESCRIPTION	INITIAL	DATE

ISSUED FOR PROGRESS REVIEW 3/25/2011
 ISSUED FOR PLAN CHECK
 ISSUED FOR PERMIT
 ISSUED FOR BID
 ISSUED FOR CONSTRUCTION



CONSULTANT:

INTERACTIVE
 RESOURCES
 ARCHITECTURE • PLANNING • ENGINEERING

117 PARK PLACE
 POINT RICHMOND
 CALIFORNIA 94801

(510) 236-7435
 (FAX) 232-5325
<http://www.intres.com>

PROJECT:

LOADS
ICE CREAM

2000 WANYE AVENUE
 SAN LEANDRO, CA

SHEET TITLE:

DETAILS

PROJ. NO.	2011-017.01
PREPARATION AND REVIEW	
DRAWN BY	CT
DESIGNER	JEC
PROJ. MGR.	JEC
PEER REVIEW	

SHEET NUMBER:

S1.2

NUMBER: OF: