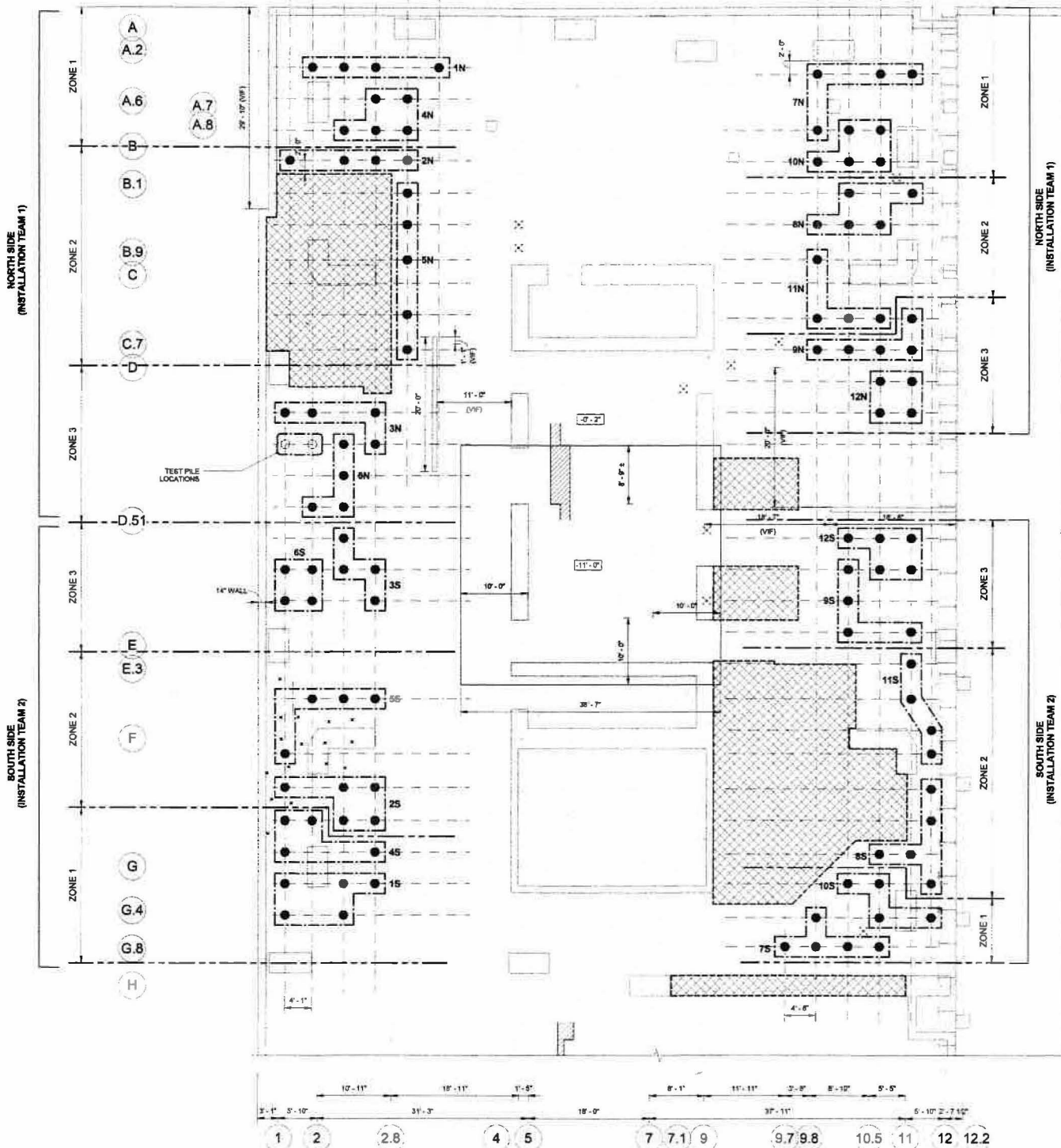


WEST SIDE PILES			EAST SIDE PILES		
GROUP	NUMBER OF PILES	PILE LOCK-OFF FORCE (KIPS)	GROUP	NUMBER OF PILES	PILE LOCK-OFF FORCE (KIPS)
TEST PILES	2	460			
1N	4	330	7N	4	670
2N	4	440	8N	5	730
3N	4	610	9N	5	800
4N	5	530	10N	5	750
5N	5	610	11N	4	810
6N	4	670	12N	4	790
1S	5	510	7S	5	700
2S	5	600	8S	5	750
3S	4	610	9S	4	800
4S	4	630	10S	4	760
5S	4	660	11S	4	810
6S	4	680	12S	5	790

- NOTES:
- FINAL PRELOAD FORCES ASSUME THE FOLLOWING:
 - TEST PILES ARE INSTALLED AT THE START OF CONSTRUCTION
 - GROUPED PILES ARE INSTALLED IN THE SEQUENCE NOTED ON THIS SHEET.
 - PILE INSTALLATION IS COMPLETED IN 11 - 13 MONTHS
 - ENGINEER SHALL BE NOTIFIED OF ANY CHANGES TO THE INSTALLATION SEQUENCE OR SCHEDULE SO THE FINAL PRELOAD FORCES CAN BE REVIEWED AND ADJUSTED AS NECESSARY

B PILE FINAL PRELOAD FORCE
 1/8" = 1'-0"

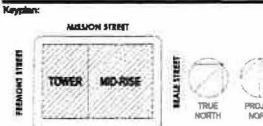


- NOTES:
- TEST PILES ARE TO BE INSTALLED AT THE START OF CONSTRUCTION PRIOR TO INSTALLING GROUP 1
 - WORK IS ORGANIZED SO THE WEST SIDE PILES ARE INSTALLED FIRST FOLLOWED BY THE EAST SIDE PILES BY TWO WORK TEAMS. NOTED PILES IN EACH INSTALLATION GROUP ARE INTENDED TO BE INSTALLED AT THE SAME TIME.
 - INSTALLATION SEQUENCE FOR EACH TEAM STARTS WITH GROUP 1, CONTINUES WITH GROUP 2 AND PROCEEDS THROUGH THE NUMBERED SEQUENCE. SO ON. PILE GROUPS NOTED "N" ARE TO BE INSTALLED BY THE NORTH TEAM AND PILES NOTED "S" ARE INSTALLED BY THE SOUTH TEAM. TEAM 1 (NORTH TEAM): GROUPS 1N-6N THEN 7N-12N. TEAM 2 (SOUTH TEAM): GROUPS 1S-6S THEN 7S-12S
 - SEE DRAWING S-4.00 AND S-4.02 FOR MORE INFORMATION ON THE PILE INSTALLATION SEQUENCE.

A RECOMMENDED PILE INSTALLATION SEQUENCE
 1/8" = 1'-0"

No.	Revision/Issue	Date

Warning:
 © Copyright LERA & ASSOCIATES, R.L.L.P.
 IT IS A VIOLATION OF LAW FOR ANY PERSON, UNLESS ACTUALLY UNDER THE DIRECTION OF A PROFESSIONAL LICENSED IN THE STATE OF THIS PROJECT, TO ALTER OR ADD TO THESE DOCUMENTS WITHOUT THE WRITTEN APPROVAL OF THE SUPERVISOR. ANY SUCH ALTERATION SHALL BE THE RESPONSIBILITY OF THE PERSON MAKING THE ALTERATION. THE SUPERVISOR SHALL BE FOLLOWED BY HIS SIGNATURE, THE DATE, AND A BRIEF DESCRIPTION OF THE ALTERATION.



Phase:
CONSTRUCTION DOCUMENTS

Project Title:
301 Mission Street

Drawing Title:
GLOBAL PILE INSTALLATION SEQUENCE

Drawn:	Design:
Author:	Designer:
Check:	Date:
Checker:	16 APRIL 2018
Scale:	Project Numbers:
1/8" = 1'-0"	PG4021

IN PROGRESS
 31 OCT 2018

S-4.01