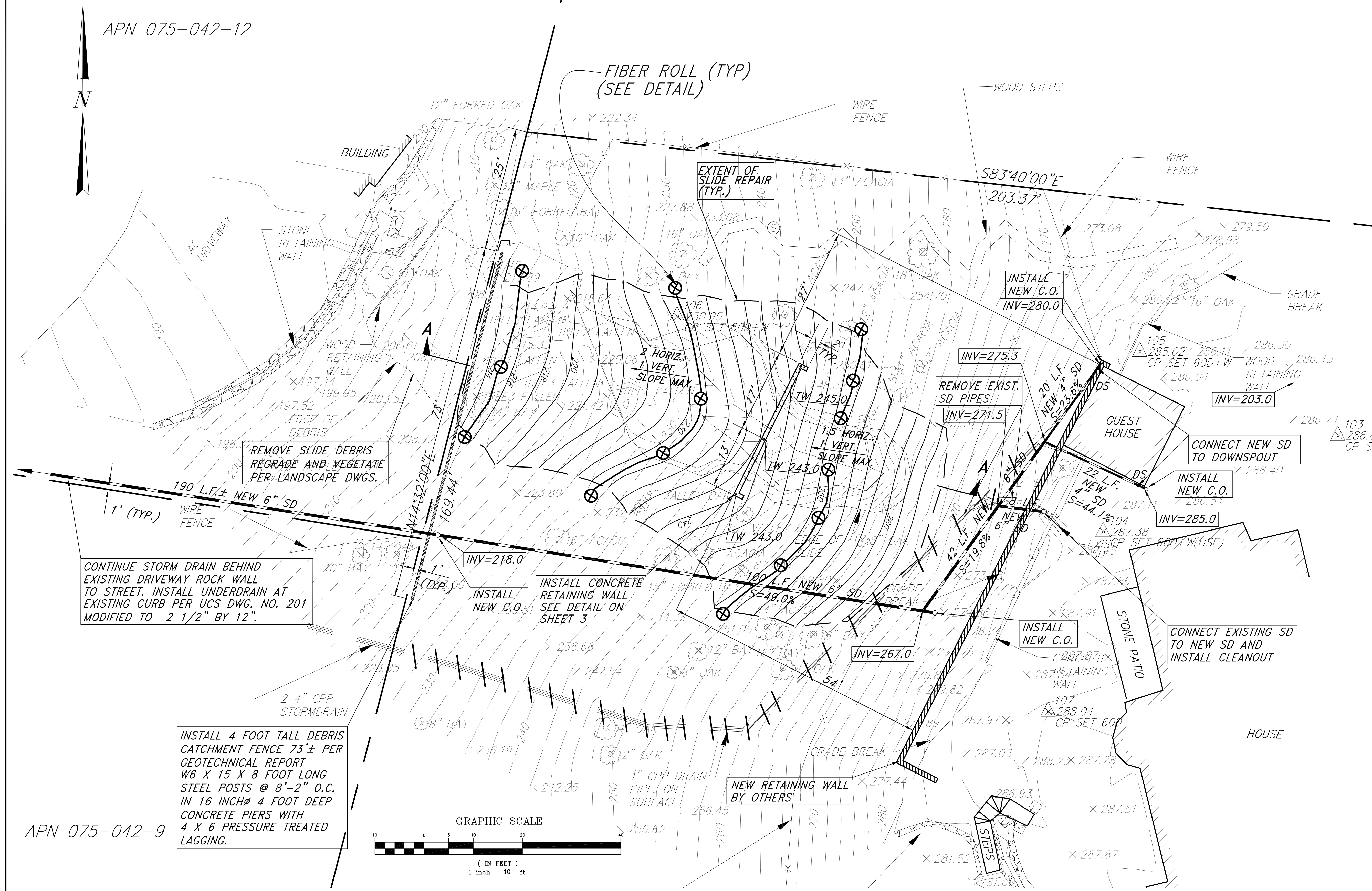
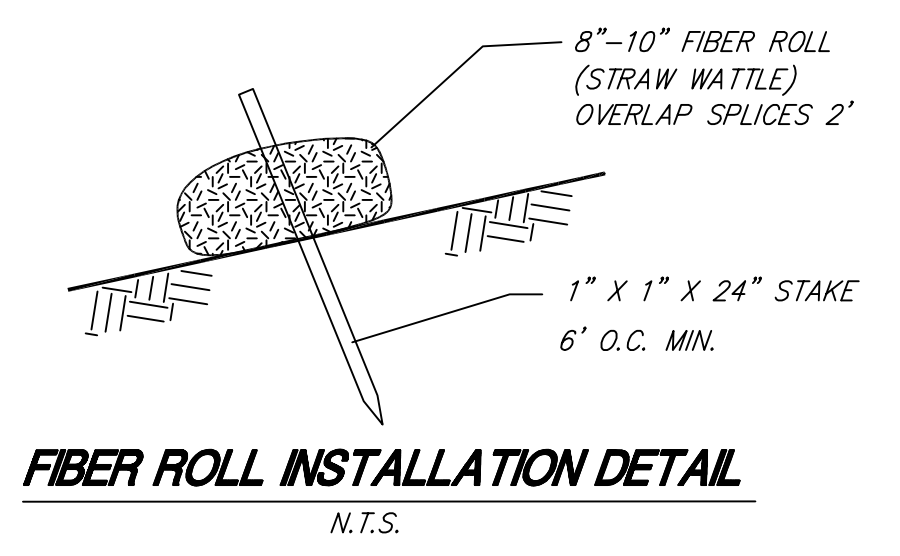


EROSION CONTROL NOTES:

1. THE LOCATION OF ALL EROSION CONTROL FEATURES SHOWN ON THESE PLANS ARE APPROXIMATE ONLY. ACTUAL LOCATIONS ARE TO BE DETERMINED IN THE FIELD BY THE ENGINEER.
2. THE SITE SHALL BE INSPECTED BY THE CONTRACTOR AT LEAST MONTHLY DURING THE WINTER MONTHS AND AFTER EACH MAJOR RAINFALL. AT THIS TIME ANY SILT SHALL BE REMOVED WHERE NECESSARY AND ANY DAMAGED EROSION CONTROL FEATURES SHALL BE REPAIRED.
3. WHERE DEEMED NECESSARY BY THE ENGINEER IN THE FIELD OTHER EROSION CONTROL MEASURES MAY BE REQUIRED.
4. FIBER ROLLS MAY BE TEMPORARILY REMOVED TO GAIN ACCESS TO CONSTRUCTION AREAS. THEY SHALL HOWEVER BE REPLACED AT THE END OF EACH WORKING DAY WHEN RAIN IS OCCURRING OR PREDICTED AND AT THE END OF THE WORK DAY EACH FRIDAY.
5. EROSION CONTROL SHALL BE IMPLEMENTED PRIOR TO OCTOBER 15 FOR THOSE PORTIONS OF THE SITE WHICH HAVE BEEN DISTURBED. EROSION CONTROL MEASURES SHALL BE MAINTAINED THROUGHOUT CONSTRUCTION UNTIL PAVING IS IN PLACE.
6. THE FOLLOWING WINTERIZATION MEASURES SHALL BE IMPLEMENTED IF ALL GRADING IS NOT COMPLETED OR SCHEDULED TO BE COMPLETED PRIOR TO OCTOBER 15.
 - A. ALL GRADING SHALL BE CARRIED OUT IN SUCH A WAY AS TO DISTURB THE LEAST POSSIBLE AREA.
 - B. PRIOR TO SEPTEMBER 15, WINTERIZATION MATERIALS SHALL BE STOCKPILED ON THE SITE AND COVERED TO BE USED FOR WINTERIZATION MEASURES.
7. IF EROSION CONTROL FEATURES ARE REMOVED TO ALLOW CONSTRUCTION TO CONTINUE, THEY SHALL BE REPLACED WHEN RAIN IS IMMINENT OR PREDICTED AND AT THE END OF THE WORKDAY EACH FRIDAY.



LEGEND

- PROPOSED RETAINING WALL
- PROPOSED CATCHMENT FENCE
- EXISTING CONTOURS
- PROPOSED CONTOURS
- TW TOP OF WALL
- DS DOWNSPOUT
- C.O. CLEANOUT
- SD STORM DRAIN
- INV INVERT

NOT APPROVED FOR CONSTRUCTION

ILS ASSOCIATES, INC.
CIVIL ENGINEERING AND LAND SURVEYING

79 GALLI DRIVE, SUITE A NOVATO, CA 94949-5717 (415)883-9200 FAX (415)883-2763

POMERANTZ
70 RANCHERIA ROAD

KENTFIELD CALIFORNIA 94969

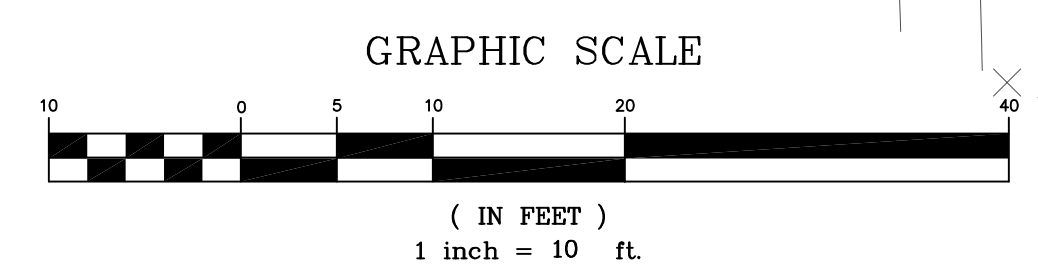
SLIDE REPAIR PLAN

DRAWN: M.E./M.J.M.
DATE: 8/3/07
JOB NO. 7969
SHEET NO. 2 OF 4

A.P.N.: 075-042-07
FIELD BOOK NO.: 216

Irving L. Schwartz, C.E.
R.C.E. 18221

7969SR4.dwg



INSTALL 4 FOOT TALL DEBRIS CATCHMENT FENCE 73'± PER GEOTECHNICAL REPORT W6 X 15 X 8 FOOT LONG STEEL POSTS @ 8'-2" O.C. IN 16 INCHØ 4 FOOT DEEP CONCRETE PIERS WITH 4 X 6 PRESSURE TREATED LAGGING.

CONTINUE STORM DRAIN BEHIND EXISTING DRIVEWAY ROCK WALL TO STREET. INSTALL UNDERDRAIN AT EXISTING CURB PER UCS DWG. NO. 201 MODIFIED TO 2 1/2" BY 12".

REMOVE SLIDE DEBRIS REGRADE AND VEGETATE PER LANDSCAPE DWGS.

INSTALL CONCRETE RETAINING WALL SEE DETAIL ON SHEET 3

REMOVE EXIST. SD PIPES

CONNECT NEW SD TO DOWNSPOUT

INSTALL NEW C.O.

CONNECT EXISTING SD TO NEW SD AND INSTALL CLEANOUT

NEW RETAINING WALL BY OTHERS

N:\P\07507969\dwg\7969SR4.dwg, S:\T\2\05C, 02/20/2007 9:17:17 AM, ILS Assoc., Inc., ME