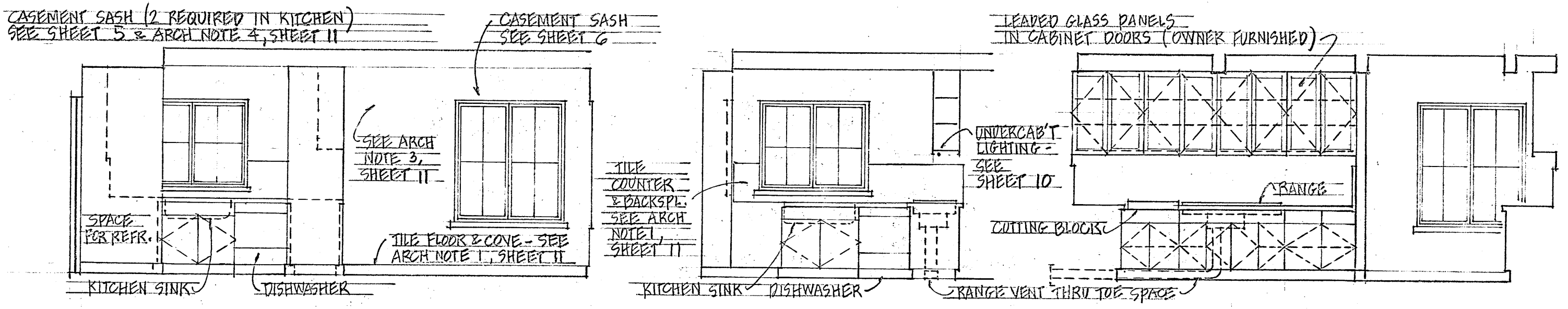
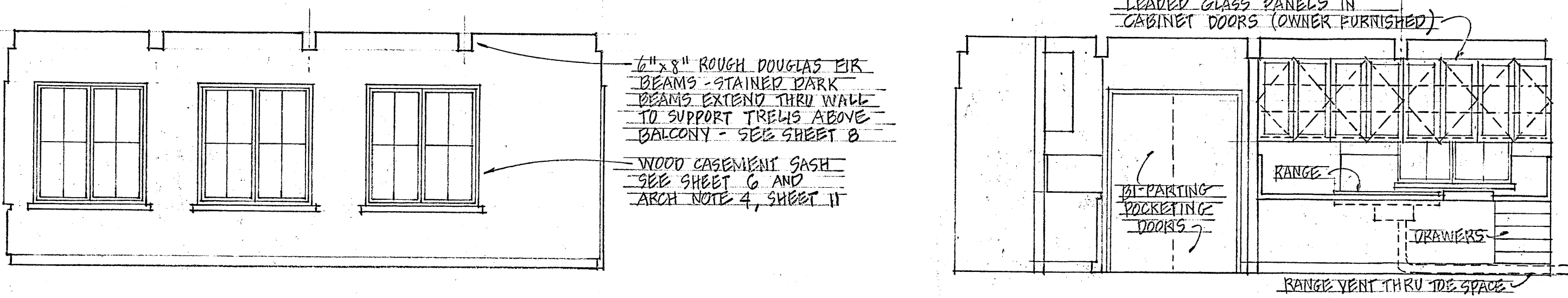


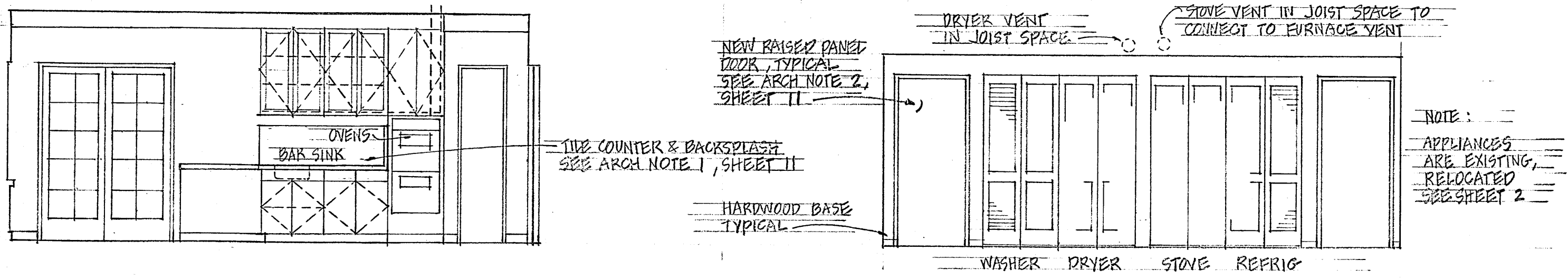
HALL PASSEGE EAST KITCHEN EAST NORTH WEST SOUTH



KITCHEN DINETTE SOUTH KITCHEN SOUTH KITCHEN DINETTE SOUTH



DINETTE ENTRY WEST HALL PASSEGE DINETTE EAST



ENTRY KITCHEN PASSAGE NORTH LOUNG E EAST

- NOTES**
- KITCHEN CABINETS, INTERIOR MILLWORK, AND INTERIOR HANDRAILS TO BE SOLID WHITE OAK, FINISHED ONLY WITH "WATCO" NATURAL WOOD OIL. NO SUBSTITUTIONS. CABINET FACE PANELS TO BE PLAIN FACE OR PATTERN SELECTED BY OWNER, OR GLAZED AS SHOWN ON THE ELEVATIONS
 - CABINET PIVOT HINGES TO BE TIGHT-PIN "MCKINNEY" #2834 (HORIZ STILES), #2835 (VERTICAL STILES) & #2836 (VERT STILE/INTERMED. POSITION); FINISH US 26. MAGNETIC CATCHES TO BE "MCKINNEY" #2911 OR SYSTEM APPROVED BY OWNER. ALL CABINET DOORS AND DRAWERS TO BE CONSTRUCTED TO BE OPERABLE WITHOUT EXPOSED PULLS. WARDROBE DOOR PULLS TO BE APPROVED BY OWNER.