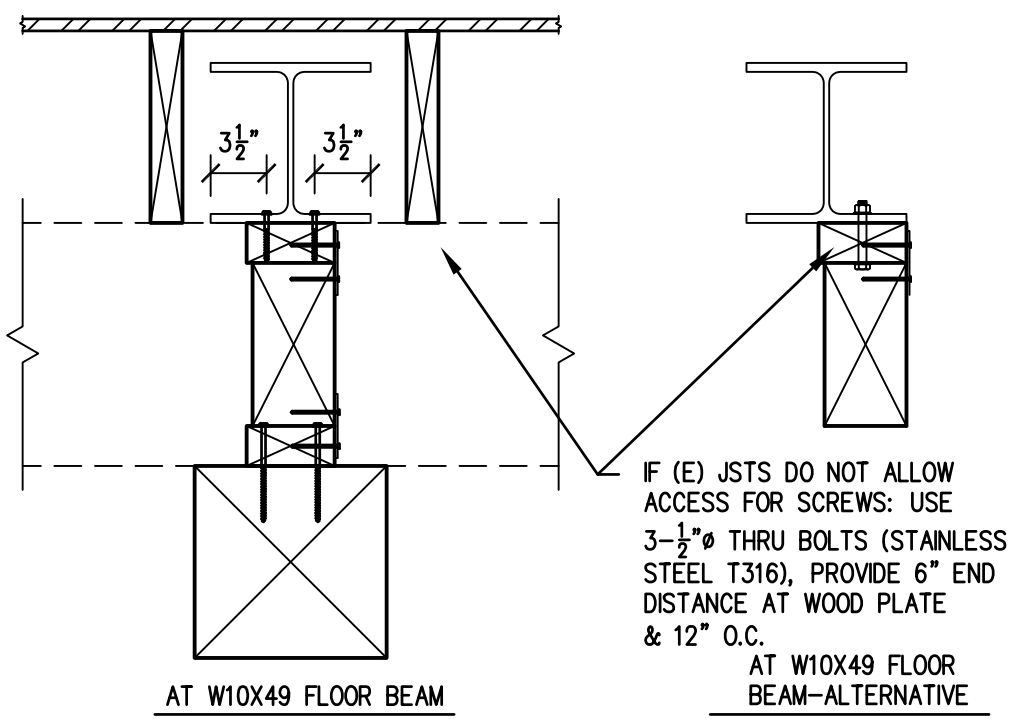


SEE DETAIL ABOVE FOR ADDITIONAL NOTES

NOTE: 2 SHEAR BLOCKS (1 BETWEEN LINE C & B AND 1 BETWEEN LINE B & A) WITH A MINIMUM LENGTH OF 3'-0" REQUIRED

NOTE: COVER ALL TOPS OF SDS SCREWS WITH BITUTHENE



1 SHEAR BLOCKS ABOVE BENT AT LINE 6