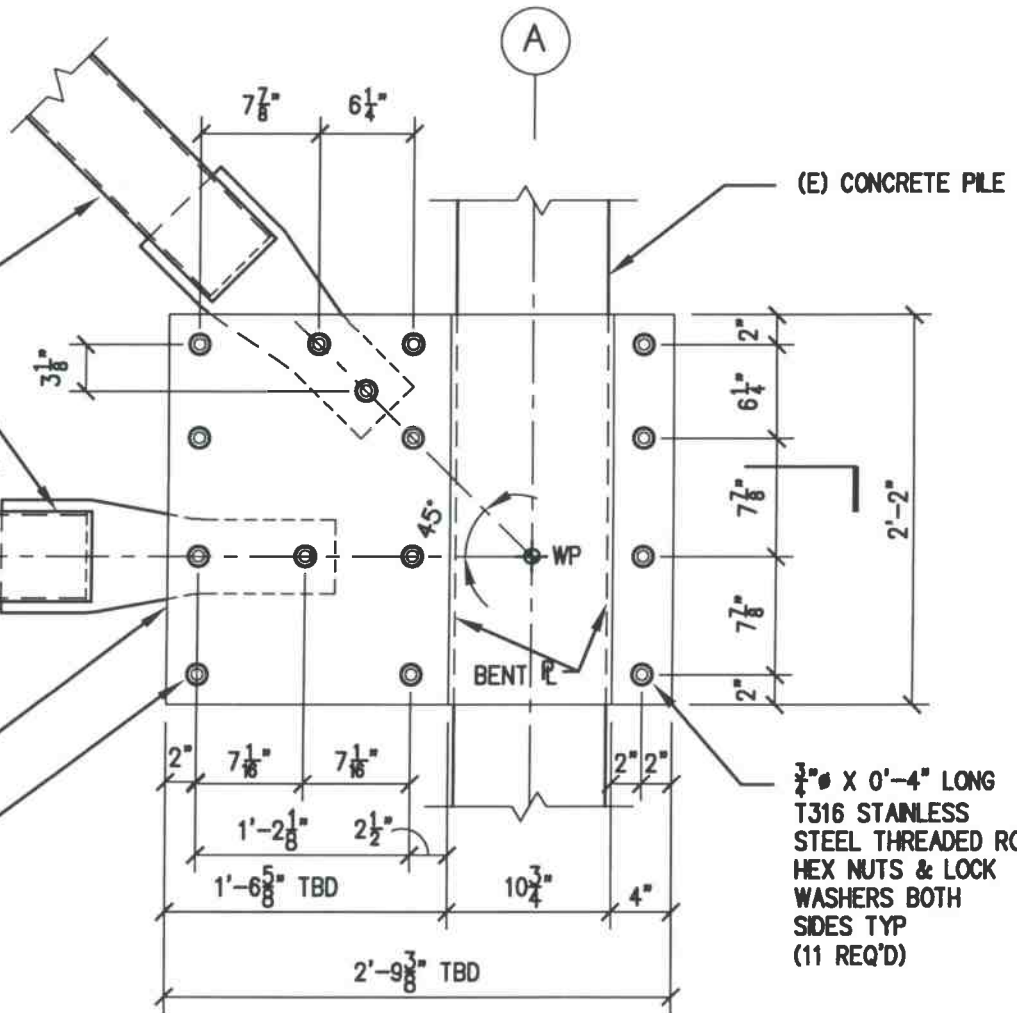


(N) HSS 6x2x $\frac{1}{4}$ BRACE,
(STAINLESS STEEL T316),
EXACT LENGTH TO BE
DETERMINED IN FIELD,
SEE 1/S32 & 1/S33 FOR
DIMENSIONS OF
CONNECTORS

1
S25
SIM

$\frac{3}{8}$ " PLATE (STAINLESS
STEEL T316), TYP

ALL HOLES IN
STEEL $\frac{13}{16}$ " ϕ



$\frac{3}{4}$ " ϕ X 0'-4" LONG
T316 STAINLESS
STEEL THREADED ROD,
HEX NUTS & LOCK
WASHERS BOTH
SIDES TYP
(11 REQ'D)

(ONE HALF OF CONNECTION SHOWN)
LOOKING EAST - OPPOSITE HAND

1
S30

LOWER CONN AT GRID LINES 5-A - ELEV LOOKING WEST

Copyright © 2010 J. B. Kardon and L. B. Karp

1"=1'-0"